

User Guide



KS108 USB Sound Card Online Singing Device

Overview

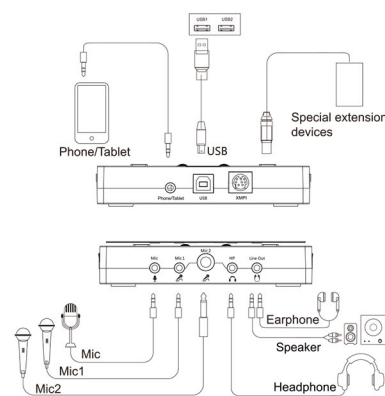
Thank you for purchasing this KS108, one of our versatile sound cards. You now have a simple and compact solution for high-quality music enjoyment, recording, online chatting and karaoke.

With a built-in DSP this KS108 provides up to 16 types of digital reverb FX(Audio Effect). All the major functions and FXs can be realized by the operation of this KS108 hardware only. It also provides a PnP jack that connects iOS/Android operating system of smart phone and tablet. It can be run on many popular operating systems such as Windows, Linux and Mac. For more convenience, this KS108 comes with an accompanying control panel. All functions can be realized through the control panel. You can download the control panel from our website: download.xoxchina.com.

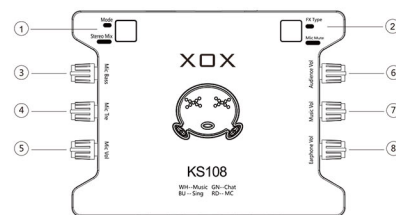
Package Content

Item	Qty.	Item	Qty.
KS108 Main Unit	1	User Guide	1
USB Cable	1	Phone/Tablet Cable	1

Wiring Diagram



Product Appearance



Hardware Instruction

According to different user habits, KS108 provides both hardware operation and software control panel. All the hardware functions can be adjusted in software control panel. You can choose according to your own preference.

Part I

In total, this KS108 has 4 modes: music listening, chatting, singing and MC.

Music: the microphone automatically goes mute. Comfortably enjoy music or movie in a stereo sound environment. Apply to music listening, movies and videos watching.

Chat: hear and be heard crystal clear when talking online. Apply to online chatting, phoning, gaming and so on.

Sing: sing directly to your friend online with 16 types of real time hardware reverb FX. Apply to singing, online karaoke.

MC: your voice comes out with reverberation and the volume of background music automatically goes down so it won't cover your voice. All the settings can only be adjusted from software, not from the hardware. Apply to online hosting, rap, free style rap and so on.



- ① -----Short press this button① to change among the 4 modes: Music, Chat, Sing and MC.
- Long press this button① to turn on/off the Stereo Mix function.

Mode: the current working mode, which is distinguished

by different color light on the logo

White light(WH) -- Music Mode
Green light(GN) --Chat Mode
Blue light(BU) -- Sing Mode
Red light(RD) -- MC Mode.

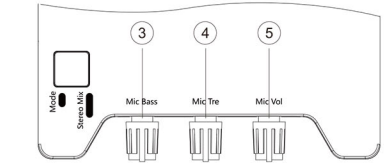
Stereo Mix: with the blue light on, the Stereo Mix is turned on. Under any mode, when the Stereo Mix is on, the background music and microphone sound will be recorded together and your audience can hear your background music too.

FX(Audio Effect)Type



- ② -----Short press this button② to choose the 16 FX types.
- Long press this button② to mute/unmute the microphone.

Part II



This KS108 has 2-band equalizer (EQ): the bass and the treble. By rotating these 2 knobs ③④, you can adjust them until you think your voice captured by the microphone is at its best tone.

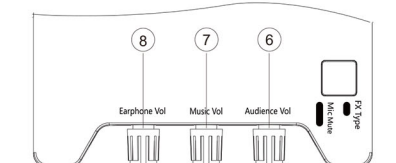
③ **Mic Bass:** adjust knob clockwise to strengthen of microphone's bass tone.

④ **Mic Tre:** adjust knob clockwise to strengthen of microphone's treble tone.

⑤ **Mic Vol:** adjust knob clockwise to increase the microphone volume so that both you and your audience can hear louder.

Suggestion: adjust "Mic Vol" between 12-3 o'clock; "Mic Tre" between 11-13 o'clock; "Mic Bass" between 9-12 o'clock.

Part III



⑥ **Audience Vol/Rec Vol:** adjust knob clockwise to increase both the volume your audience hears and the sound recorded.

⑦ **Music Vol:** adjust knob clockwise to increase the background music.

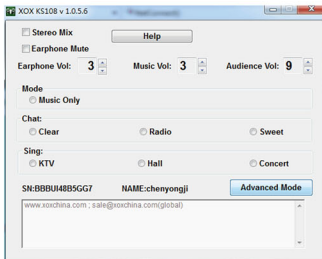
⑧ **Earphone Vol/Master Vol:** adjust clockwise to increase both the background music and the sound captured by microphone.

Software Instruction

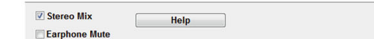
The accompanying control panel applies to Windows (XP, Vista, 7, 8). For more convenient use, please download the control panel from our website download.xoxchina.com

All the hardware functions can be adjusted from the following control panel. The control panel comes in 2 modes: primary and advanced. In primary mode, you will see a simplified panel, but for more functions, please enter into the advanced mode.

Primary Mode



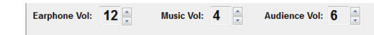
Check Boxes:



Stereo Mix: under any mode, when you check this box, the background music and microphone sound will be recorded together and your audience can hear your background music too.

Earphone Mute: mute both the background music and the sound of microphone.

Volume:

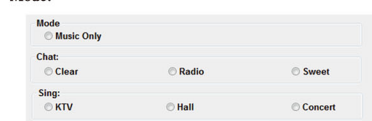


Earphone Vol/Master Vol: you can adjust your earphone volume here, which means that you can adjust the background music and voice volume you hear. The larger the number is, the louder you can hear.

Music Vol: adjust the PC/mobile background music volume. The larger the number is, the louder the music is.

Audience Vol/Rec Vol: the volume your audience can hear. The larger the number is, the louder you can be heard.

Mode:

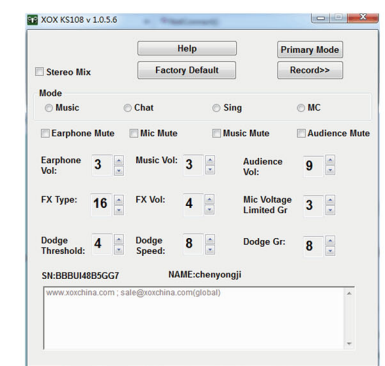


Music: the microphone automatically goes mute. Comfortably enjoy music or movie in a stereo sound environment. Apply to music listening, movie and video watching.

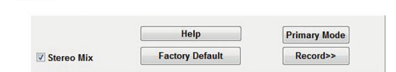
Chat: hear and be heard crystal clear when talking online. Here you can choose three different effects according to the different situations. Apply to online chatting, phoning, gaming and so on.

Sing: under this mode, you will have 3 different effects, KTV, Hall and Concert. Among the three effects, the degree of reverberation is different. Apply to singing, online karaoke.

Advanced Mode



Note:



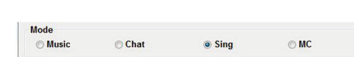
Stereo Mix: under any mode, when you check this box, the background music and microphone sound will be recorded together and your audience can hear your background music too.

Help: click here, you can get help from our FAQ column.

Primary Mode: click here, you can go back to primary mode.

Factory Default: click here, all your settings will be restored to their original

Record: click here, you can record your voice and save what you recorded



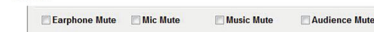
Music: the microphone automatically goes mute. Comfortably enjoy music or movie in a stereo sound environment. Apply to music listening, movies and videos watching.

Chat: hear and be heard crystal clear when talking online. Apply to online chatting, phoning, gaming and so on.

Sing: sing directly to your friend online with 16 types of real time hardware reverb FX for your choice. Apply to singing, online karaoke.

MC: your voice comes out with reverberation and the volume of background music automatically goes down so it won't cover your voice. Apply to online hosting, rap, free style rap and so on.

Mute:



Earphone Mute: check this box, you cannot hear any sound from your earphone

Mic Mute: check this box, you and your audience cannot hear your voice, but your audience can still hear your background music.

Music Mute: check this box, you cannot hear background music from your PC/mobile or voice from your audience. Your audience can hear your voice without background music.



Earphone Vol: you can adjust your earphone volume here, which means that you can adjust the background music and voice volume you heard. The larger the number is, the louder you can hear.

Music Vol: adjust the PC/mobile background music volume. The larger the number is, the louder the music is.

Audience Vol: the volume your audience can hear. The larger the number is, the louder you can be heard.

FX:



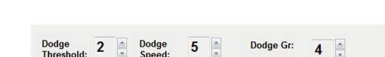
FX(Audio Effect) Type: different types of FX have different degrees of reverberation.

FX (Audio Effect)Vol: adjust the effect volume. For your convenience, we've set the recommended FX volume for each FX type you choose.

Mic Voltage Limited Gr: avoid voice cracking at high notes. The larger volume captured by your microphone, the higher grade you may need to set.

Dodge:

Dodge means the background music dodges your voice. That is, the background music volume will be turned down when you speak and be back when you finish speaking.



Dodge Threshold: the lowest voice volume that triggers this dodge threshold. The larger the number is, the louder you need to sing to trigger this dodge function.

Dodge Speed: the speed of the background music turning down when dodge is triggered. The larger the number is, the faster the background music will be back.

Dodge Gr: reduction percentage of background music. The larger the number is, the more volume the background music will reduce when dodge is triggered.

Important Safety Instruction

1. Clean the device only with dry cloth.
2. Do not install near any heat sources such as radiators, heat registers, stoves, or other apparatus that produce heat.
3. No naked flames, such as lighted candles, should be placed on the device.

WARNING

WARNING: Excessive sound pressure levels from earphones and headphones can cause hearing loss.

WARNING: The input voltage of the power supply should be 5V.

Shenzhen XOX Electronics Co.,Ltd.

Add: 6F, Bldg F, Xinghui Sci-Tech Industrial Park, Huanning West Rd, Dalang Area, Longhua Dist, Shenzhen
Tel: +86-755-82908466
Email: sale@xoxchina.com
Web: www.xoxchina.com

